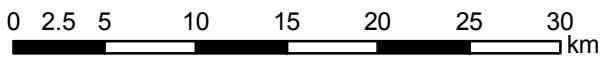
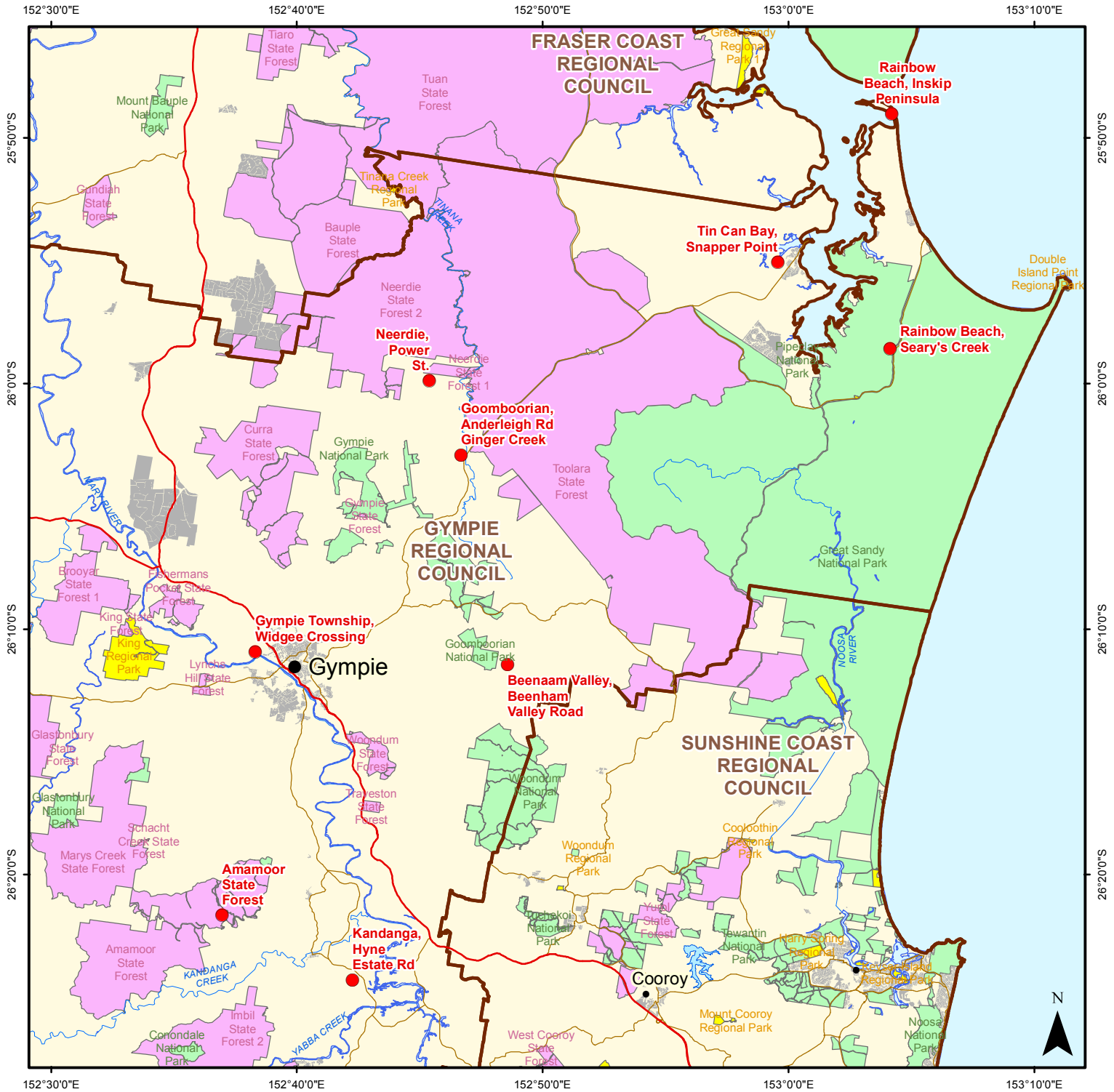


Flying fox camps within Local Government Areas of Queensland

Map 17: Gympie Regional Council



Legend

- Flying fox camps (current on 10 Feb 16)
- Major urban centres
- Regional centres
- Roads
- ▭ Local government boundaries
- ▭ Urban areas
- ▭ Reservoirs
- ▭ Principal rivers
- ▭ Protected Areas of Queensland
 - ▭ National Park
 - ▭ National Park (CYPAL)
 - ▭ Regional Park
 - ▭ Forest Reserve
 - ▭ State Forest
 - ▭ Timber Reserve

Disclaimer

This map has been prepared with all due diligence and care, based on the best available information at the time of publication. Neither the Department nor the Queensland Government holds any responsibility for any errors or omissions within this document. Any decisions made by other parties based on this document are solely the responsibility of those parties.

Produced by Department of Environment and Heritage Protection
© The State of Queensland 2016

Horizontal datum: GDA94
Projection: geographical coordinates



**Queensland
Government**

