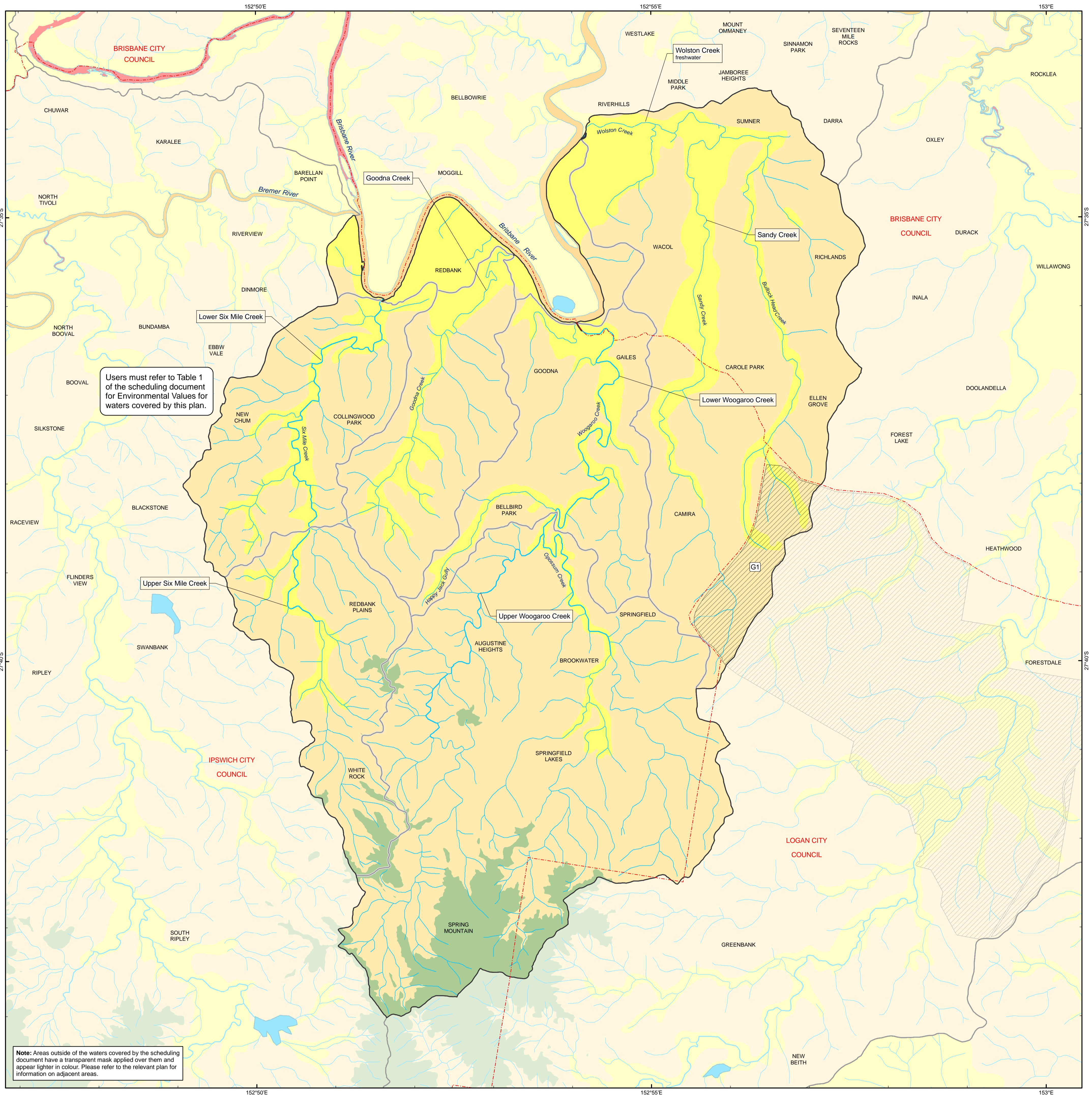


# SANDY, SIX MILE, WOLSTON, WOOGAROO AND GOODNA CREEKS, INCLUDING ALL TRIBUTARIES OF THE CREEKS

## Part of Basin 143



**Note:** Areas outside of the waters covered by the scheduling document have a transparent mask applied over them and appear lighter in colour. Please refer to the relevant plan for information on adjacent areas.

### Key to Environmental Values


### Legend

	<b>Water Types</b>
	<b>Marine / estuarine waters</b>
	<b>Freshwaters</b>

**Note for users:** Areas of the catchment that are not shown on this map as having a management intent of high ecological values, slightly disturbed or highly disturbed, have a management intent of moderately disturbed.

## Environmental Protection (Water) Policy 2009

### South-east Queensland Map Series

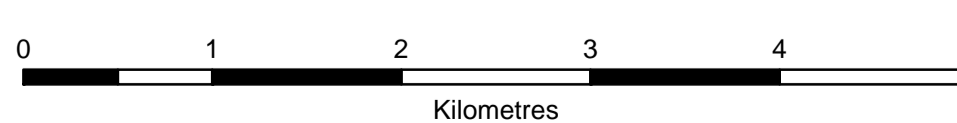
### PLAN WQ1435

Publication date: July 2010

This plan forms part of the Sandy, Six Mile, Wolston, Woogaroo and Goodna Creeks Environmental Values and Water Quality Objectives scheduling document, prepared pursuant to the *Environmental Protection (Water) Policy 2009*.



Projection: Map Grid of Australia (MGA) Zone 56  
Horizontal Datum: Geocentric Datum of Australia 1994 (GDA94)



Scale of 1:40,000 when printed @ A1



**Disclaimer**  
Whilst every care is taken to ensure the accuracy of this product, the Department of Environment and Resource Management makes no representations or warranties about its accuracy, reliability, completeness or suitability for any particular purpose and disclaims all responsibility and all liability (including without limitation, liability in negligence) for all expenses, losses, damages (including indirect or consequential damage) and costs which you may incur as a result of the product being inaccurate or incomplete in any way and for any reason.  
Includes GEODATA-product © Commonwealth of Australia (Geoscience Australia) 2010.  
© The State of Queensland (Department of Environment and Resource Management) 2010