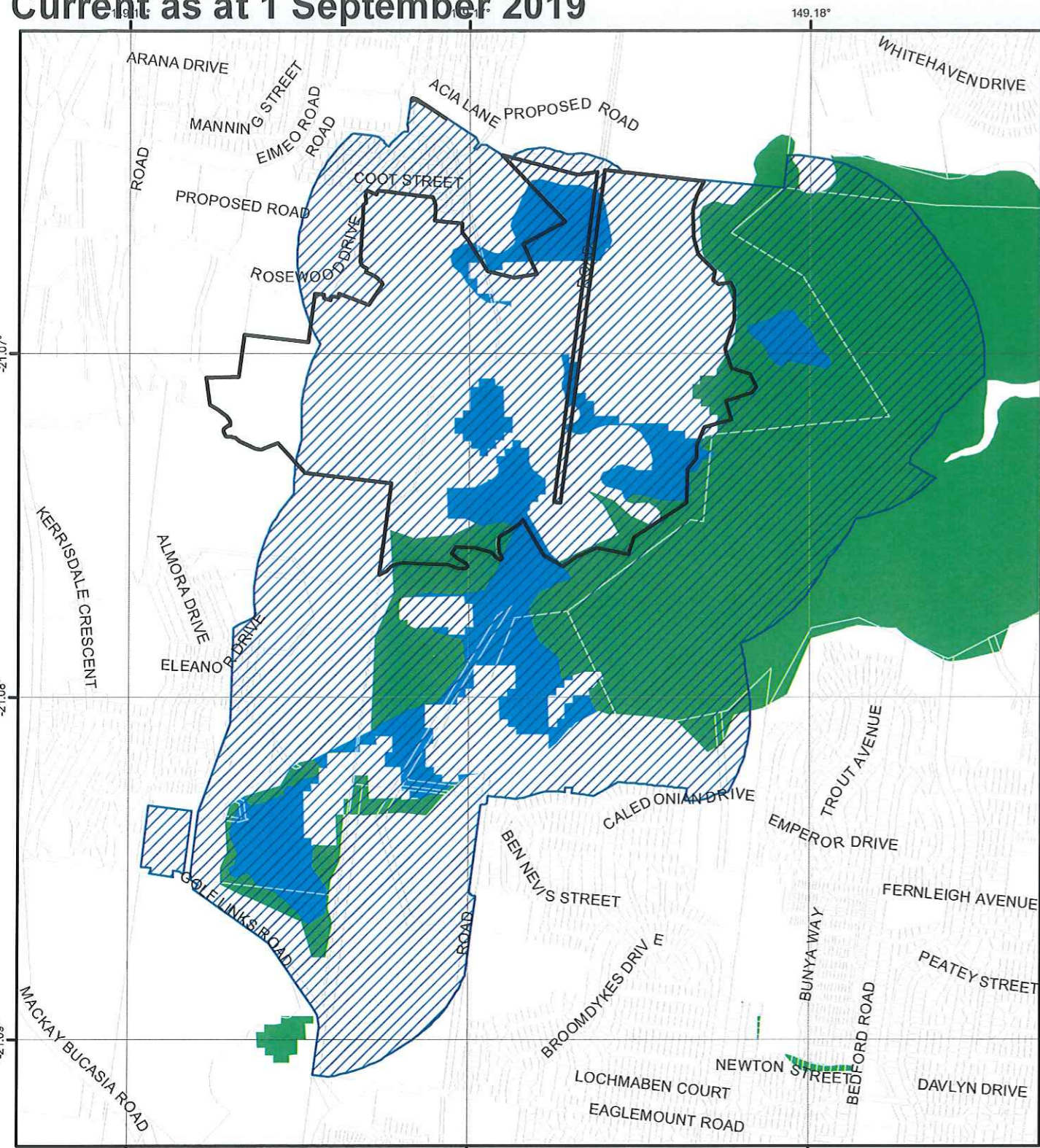
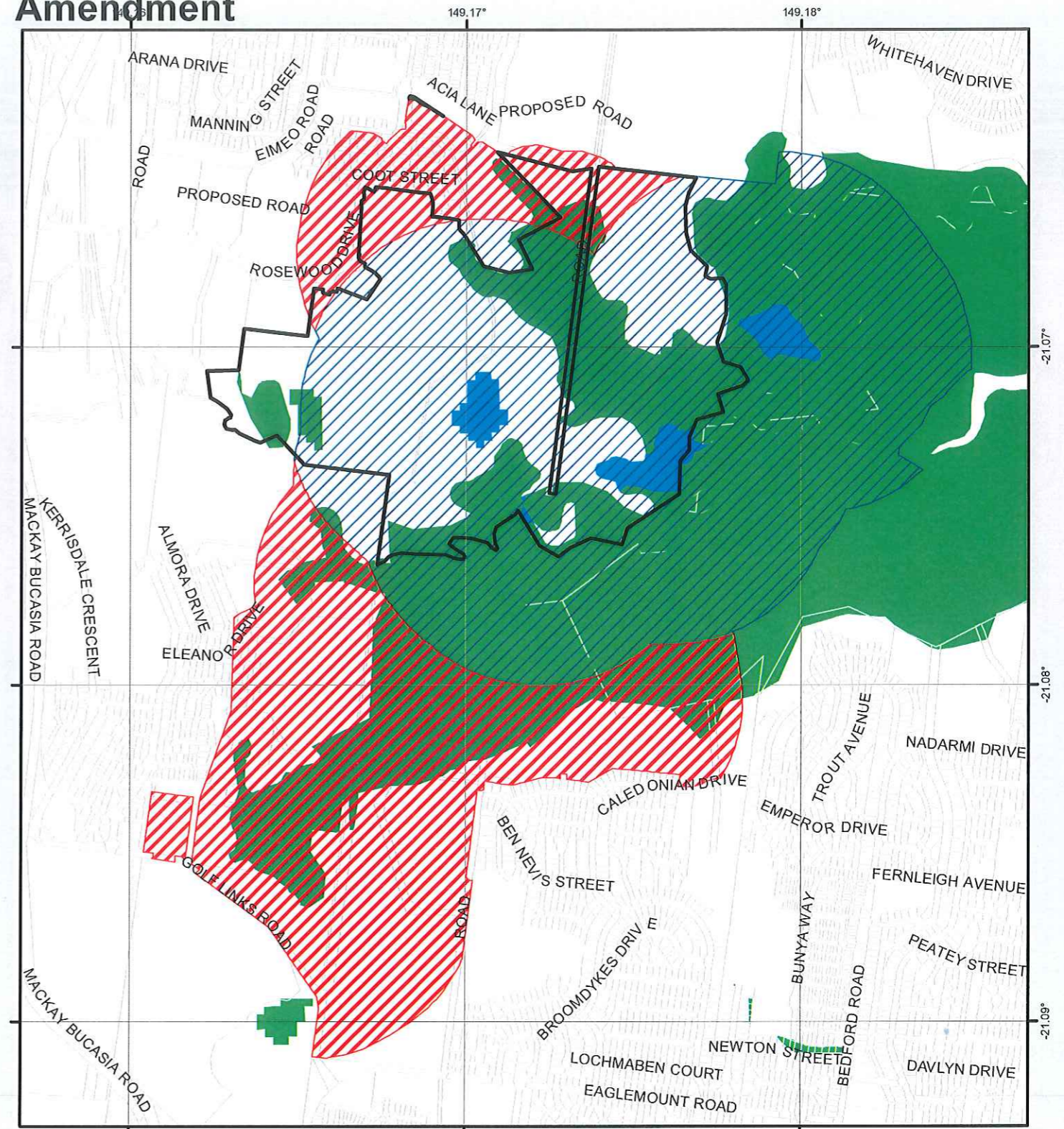


Current as at 1 September 2019

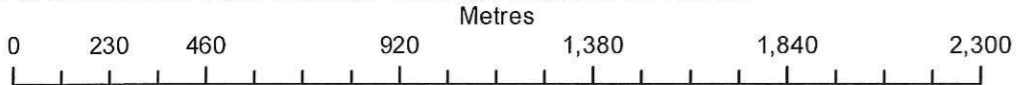


Amendment



**Amendment of the  
Environmental Protection Wetlands  
Rosewood Drive Rural View Mackay  
QLD 4740  
Lot Plan 981SP316974  
(formerly 975SP287963)**

Map Amendment Register Request No.107  
Map of Queensland Wetland Environmental Values Amendment No: QWEV0012  
Map of Great Barrier Reef Wetland Protection Areas No: WPA00052



NOTE:  
An amendment to the Map of Queensland Wetland Environmental Values amends a wetland shown on the Map of Great Barrier Reef Wetland Protection Areas

**Legend**

- Lot Plan 981SP316974
- Property Boundary

**Queensland Wetland  
Environmental Values**

- GBR wetland of high ecological significance
- Wetland of high ecological significance
- Wetland of general ecological significance
- Great Barrier Reef Wetland Protection Area

**WPA00052**

- Remove GBRWPA

**CERTIFICATION OF THE MAP OF QUEENSLAND WETLAND ENVIRONMENTAL VALUES OR THE MAP OF GREAT BARRIER REEF WETLAND PROTECTION AREAS**

1. I *Liz Yang* Director, Sustainable Environment, Environmental Policy and Planning Branch, Environmental Policy and Programs, as delegate under Environmental Protection Delegation (No 2) 2019 for the Chief Executive (Environment) under the *Environmental Protection Act 1994*, by this certification, notify that the all data described in this paper format map amends an area shown as either:

- a wetland or a wetland protection area on the 'Map of Great Barrier Reef wetland protection areas' amended under section 186 of the Environmental Protection Regulation 2019, or
- a wetland on the 'Map of Queensland wetland environmental values' amended section 19 of the Environmental Protection (Water and Wetland Biodiversity) Policy 2019

2. The relevant map will be revised electronically to incorporate the amended data contained in this paper format map and released as a new version at a future date.

Director

Date 17/9/2021

GBR- Great Barrier Reef  
HES- High ecological significance